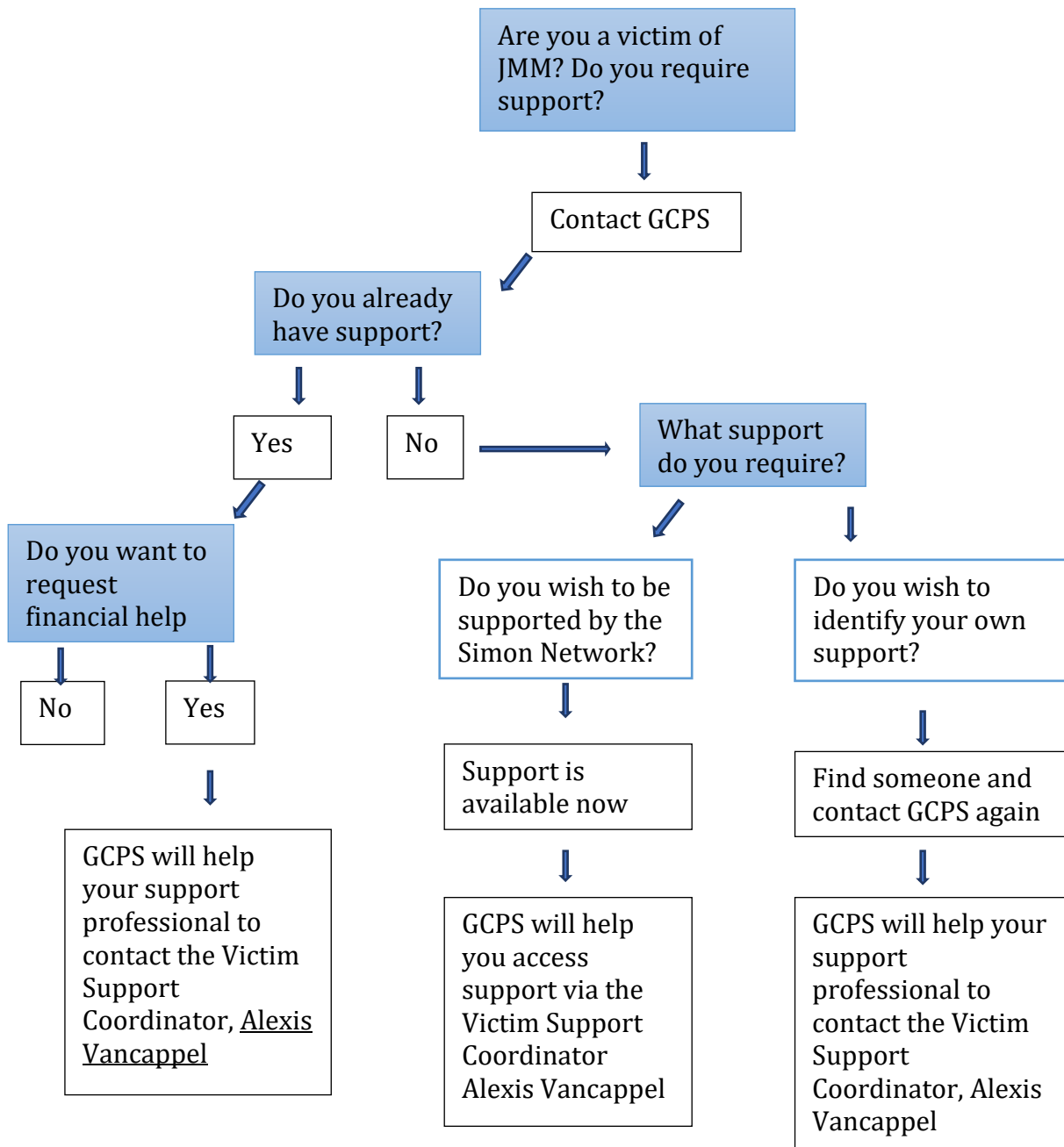


Victim Support Process



FOREWORD

As far as the support of victims is concerned, the Focolare Movement has identified the *Simon* network, which has specialists available for those who need and request psychological or psychiatric accompaniment at different stages of the investigation.

It has therefore entered into an agreement with this network with a fixed fee to facilitate access to victims as close as possible to where they live (the network covers most of France).

Those who do not wish to use the support network provided by the Focolare Movement may call on other professionals they trust.

In any case, both the professionals of the *Simon* network and those trusted by the individual victims will agree on all aspects of the psychological or psychiatric accompaniment process with an independent professional identified by the Focolare Movement, who will take on the role of coordinator for this phase.

VICTIM SUPPORT PROCESS

As indicated in the chart above, victims of JMM must first contact GCPS regarding their need for support and financial assistance. GCPS will explain the process and discuss current circumstances (whether they have already a counsellor and if not, what support is available, etc.).

The process will include the following stages:

1. Assuming the victim consents, GCPS will communicate to the Victim Support Process Coordinator, Alexis Vancappel, the name of the person who asked for support and of his/her counsellor.
2. The counsellor should then contact the Victim Support Coordinator, give him/her the name and agree with him/her the detail of the service/s required by the victim and projected costs. To this end, the counsellor will provide the victim support coordinator with any relevant documentation and information (in line with legal constraints regarding disclosure of patient information) to enable an objective assessment of both the support needed and its costs.
3. The coordinator, together with the individual professionals assisting the victims of JMM, will assess whether other people besides the victims themselves need support, e.g. members of their families, and will determine the costs involved.
4. The Victim Support Coordinator will ask the counsellors to provide evidence of their professional commitment (e.g. engagement letter or counselling contract) between themselves and the victim, including costs and the estimated number of sessions planned.
5. The coordinator will then inform COBETU that an agreement has been entered with an appointed counsellor and the estimated cost of the support.

6. COBETU will notify the Focolare Movement of the request for support, and after that the latter will authorise the payment of the support package agreed upon between the consultant and the coordinator and will agree directly with the counsellor to pay him/her upon receipt of his/her invoices.
7. The support sessions can begin